



Board Monitoring Report

Student Services

March 17, 2025



Table of Contents

Introduction:	3
Recruitment	3
High School Engagement & Recruitment	3
Recruitment on-campus events	4
Testing Days, Campus Tours	5
Community Recruitment	6
Enrollment	6
Enrollment Demographics	7
Academic Advising	8
Financial Aid	10
Graduation	16
Learning Resources that Support Attainment of their Educational Goals	19
Student Services Available Online	19
Counseling Services	20
Testing	20
Tutoring	21
Library	22
Help Obtain Post-Graduation Employment	23
Career Services	23
Legally Protected Disabilities Benefit	25
Accessibility and Resource Services	25
Disability Counts (CROA Report, 3.12.25)	26
Co-Curricular and Extracurricular Activities	27
Student Engagement	27
Clubs & Organizations	29
Athletics, Events, and Community Connections	32



Introduction:

This report provides an in-depth overview of the key areas that contribute to student services, student success, and engagement at our institution, including recruitment efforts, academic support services, and extracurricular opportunities. Throughout the 2023-2024 academic year, our focus has been on providing a holistic educational experience, ensuring that students are not only supported in their academic journey but also encouraged to engage in meaningful activities outside the classroom.

The report covers a wide range of topics, from recruitment strategies and enrollment trends to the variety of services available to students, such as academic advising, financial aid, and learning resources. Additionally, it highlights the essential role of co-curricular and extracurricular activities, which foster student engagement and help cultivate a vibrant campus community. As we reflect on these areas, our goal remains to continuously improve and enhance the resources available to students, ensuring they have the tools necessary to achieve their educational and personal goals.

Recruitment

High School Engagement & Recruitment

The Student Affairs division is committed to providing current and prospective students with positive and welcoming student services. Our team has prioritized engagement with in-district high schools, fostering strong connections with students, families, and educators.

During the 2023-2024 academic year, we hosted Parent Nights at each of our 12 area high schools in collaboration with the Coordinator of High School Partnerships & Pathways. These events offered valuable opportunities for parents and guardians to learn about the benefits of dual credit and dual enrollment programs, as well as financial aid and scholarship options. This effort has strengthened relationships with local families and increased awareness of the educational pathways available at Shawnee Community College.

Our recruiters have continued weekly visits to the 12 area high schools, engaging directly with students to discuss future academic plans, registration, and scholarships. On-campus recruiter/advisors made an impressive 203 high school visits during the 2023-2024 school year. In addition, we hosted high school registration days at each school, enrolling seniors, as well as dual-enrollment juniors and sophomores, on-site.



Our staff took the initiative to meet students where they were, making the enrollment process more accessible. This year’s high school recruitment efforts required innovation and teamwork, as one recruiter was out on maternity leave for part of the spring semester. The Director of Enrollment and the Athletic Academic Advisor stepped in to cover scheduled high school visits, ensuring continuity in our recruitment outreach.

In District High School Matriculation											
High School Graduation Year 2023											
	Grad Count	Matriculated Fall Term	Percent Matriculated Fall	Matriculated Spring Term	Percent Matriculated Spring	Dual Credit Students	Dual Credit Matriculated to Fall	Percent DC Matriculated Fall	Dual Enrollment Students	Dual Enrollment Matriculated to Fall	Percent DE Matriculated Fall
ANNA-JONESBORO COMMUNITY HS	120	34	28.33%	1	0.83%	48	13	27.08%	22	21	95.45%
Cairo High School	23	5	21.74%			2	1	50.00%	4	4	100.00%
Century High School	29	15	51.72%	1	3.45%	7	6	85.71%	9	9	100.00%
Cobden High School	49	9	18.37%			26	5	19.23%	4	4	100.00%
Dongola High School	21	9	42.86%			20	9	45.00%			
EGYPTIAN HIGH SCHOOL	30	13	43.33%	1	3.33%	16	11	68.75%	2	2	100.00%
GOREVILLE HIGH SCHOOL	34	9	26.47%	2	5.88%	22	7	31.82%	2	2	100.00%
Joppa Jr & Sr High School	19	5	26.32%			13	5	38.46%			
Massac County High School	161	32	19.88%	2	1.24%	56	12	21.43%	20	20	100.00%
Meridian High School	40	11	27.50%	1	2.50%	32	11	34.38%	1		
Shawnee High School	17	4	23.53%			3	2	66.67%	2	2	100.00%
VIENNA HIGH SCHOOL	82	12	14.63%	1	1.22%	58	12	20.69%	1		
TOTAL	625	158	25.28%	9	1.44%	303	94	31.02%	67	64	95.52%

From CROA 3/9/2025

Recruitment on-campus events

In October of 2023, SCC hosted our Shawnee Experience Day, where high school seniors had the opportunity to experience a day in the life of an SCC student. Approximately 412 juniors and seniors visited various SCC programs, learning about the certificates and degrees we offer. They also received information on admissions, financial aid, and the history of the college.

In February of 2024, SCC hosted our largest CTE Day ever, designed to highlight our Career and Technical Education programs. A total of 472 students from 11 high schools participated, focusing on technical programs for students in grades 9-10.

Number of prospective students participating in on-campus recruitment activities		
	Shawnee Experience/SCC Day	CTE Day
FY 22	360	305



FY 23	300	372
FY 24	412	472

Of the high school seniors who attended SCC Day in Fall 2023, 24.4% matriculated to SCC for the 2024-2025 school year. Notably, 9 students who did not matriculate had already earned Associate Degrees upon graduating high school. Additionally, 13 students who registered for Fall 2024 courses were lost to 'melt,' as they dropped before the semester began. These figures highlight both the success of dual-enrolled students and the ongoing challenge of student retention during the transition from high school to college.

Testing Days, Campus Tours

In preparation for Dual Credit opportunities beginning in the Junior year, we initiated on-campus testing days for several local high schools. During these events, Sophomore students are brought to campus to take the Accuplacer exam, experience a campus tour, enjoy lunch, and attend a presentation on career planning, delivered by our Career Services Coordinator, Blake Goforth, using the Career Coach tool.

We hosted 5 of these events during the 2023-2024 school year, and they were highly regarded by both students and school counselors. Due to their success and positive feedback, we plan to continue offering these testing days in the current academic year, further strengthening our partnership with area high schools and supporting students as they prepare for dual credit coursework.

Campus tours continue to be a key touchpoint for prospective students and their families. In the 2023-2024 academic year, we hosted 33 campus tours, welcoming students and their families to experience SCC firsthand. Tours are led by either a Recruiter or Student Ambassador and provide an opportunity for prospective students to meet with potential faculty members. Each visitor receives a small token of appreciation, which includes an SCC bag, T-shirt, and informational materials.

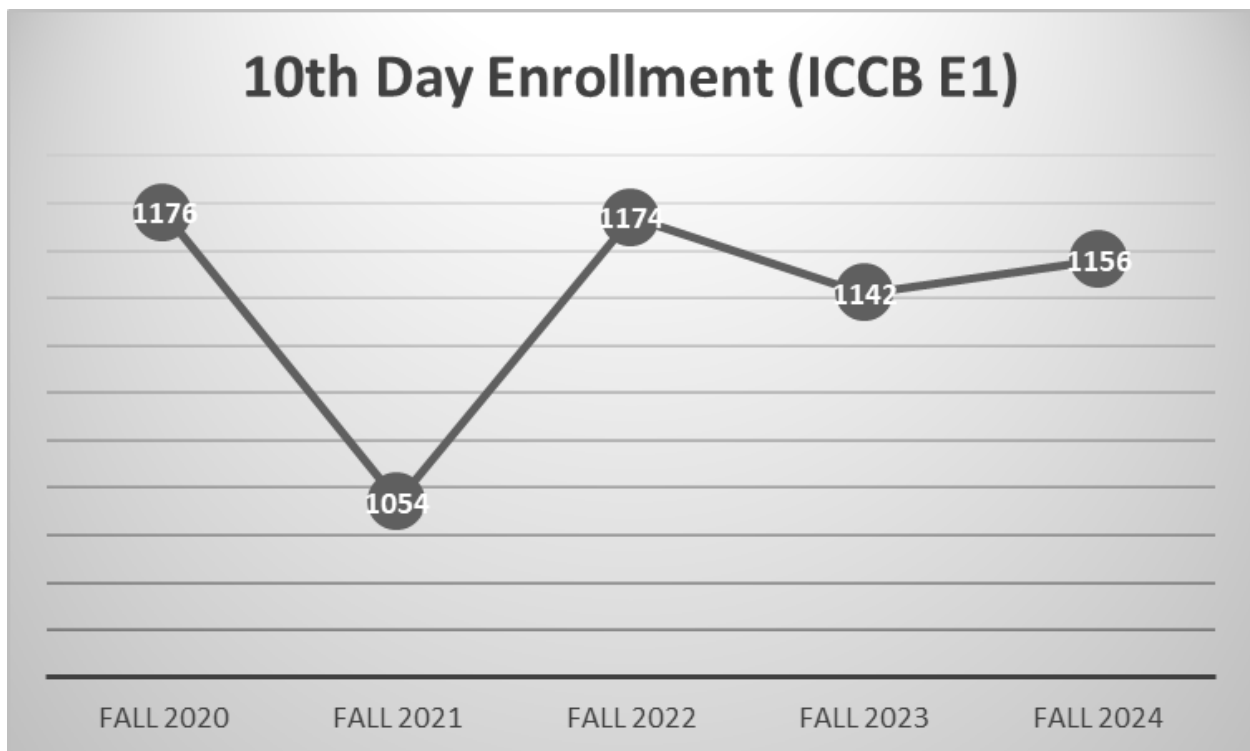
Of the 33 tours conducted, 13 students (approximately 39.4%) ultimately chose SCC as their school for the upcoming Fall semester. While these numbers reflect a positive impact, there is room for improvement in tracking tours coordinated by the Athletics Department to ensure comprehensive data on student recruitment efforts.



Community Recruitment

The Recruitment department actively participated in 7 college and career fairs throughout the 2023-2024 academic year. Given the new and unique nature of our Occupational Therapy Program—both within our district and neighboring counties—Allied Health faculty were involved in all fairs to provide specialized insights and information to prospective students. This collaboration allowed us to effectively showcase the program’s value and address student interest in this growing field.

Enrollment



After a period of fluctuation, ICCB E1 tenth-day enrollment numbers for Fall 2024 show a positive increase, rising from 1142 in Fall 2023 to 1156. This growth reflects the continued efforts to stabilize enrollment post-pandemic and indicates a promising trend toward recovery and steady improvement in student engagement and recruitment.



Enrollment Demographics

Student Gender

Gender	2018	2019	2020	2021	2022	2023	2024	2025	Unduplicated Student Count
F	5910	5966	5991	5638	4960	4910	4900	5035	4111
M	3192	2904	2792	2614	2385	2485	2759	2714	2773
Count:	9102	8871	8783	8252	7345	7395	7659	7749	6885

While overall enrollment has fluctuated over the years, there has been a steady representation of female students, with the Fall 2024 count of 1809 females and 1033 males. Female enrollment has remained higher than male enrollment each year, and though male enrollment has remained fairly consistent, female enrollment shows a slight increase from 1798 in 2023 to 1809 in 2024. This consistent trend of strong female representation contributes positively to the institution's diversity and balanced gender ratio in enrollment.

Student Ethnicity

Ethnicity	2018	2019	2020	2021	2022	2023	2024	2025	Unduplicated Student Count
American Indian	41	132	100	92	120	153	181	158	114
Asian	49	48	47	39	15	65	47	39	49
Black or African American	1292	1152	1275	1271	1134	1263	1241	1195	1104
Hawaiian/Pacific Islander					14	2	13	9	7
Hispanic	420	383	393	359	358	379	316	373	333
Two or More Races	19	51	40	55	30	58	67	122	54
Unknown	105	142	228	171	157	190	242	193	187
White	7176	6963	6700	6265	5517	5285	5552	5660	5037
Count:	9102	8871	8783	8252	7345	7395	7659	7749	6885
Unduplicated Count	1785	1671	1758	1597	1500	1505	1513	1521	

This ethnicity chart highlights the evolving diversity within our student population over the years. Notably, the number of American Indian students has grown steadily, reaching 181 in 2024 before settling at 158 in 2025. The Black or African American student population remains a consistent and significant demographic, maintaining steady enrollment numbers with slight fluctuations. The Hispanic student count, after a dip in 2024, rebounded in 2025, reaching 373. Additionally, the increase in students identifying as Two or More Races from 67 in 2024 to 122 in 2025 reflects a growing trend of multiracial representation. Although the number of White students has seen a gradual decline since 2018, this has been accompanied by greater representation from



other ethnic groups, demonstrating our institution's commitment to fostering an increasingly diverse student body.

Students by Age Range

Age Range	2018	2019	2020	2021	2022	2023	2024	2025	Unduplicated Student Count
<18	1193	1132	1309	1267	1266	1409	1297	1297	2523
18-20	4829	4664	4471	4253	3536	3539	3902	3853	3669
21-25	1417	1437	1387	1226	1211	1173	1221	1295	1336
26-30	715	624	572	511	478	495	482	479	596
31-40	551	592	566	608	491	475	458	509	635
41-50	246	237	288	269	268	207	185	243	308
51-61	123	140	134	83	71	78	96	60	167
62-65	10	13	25	15	10	5	6	8	41
66-67	5	6	5	9	4	2	4	3	20
68+	13	26	26	11	10	12	8	2	33
Count:	9102	8871	8783	8252	7345	7395	7659	7749	6885

This chart provides an insightful breakdown of student enrollment by age range over the years. The <18 and 18-20 age groups consistently account for the majority of enrollments, with the latter group peaking at 3902 in 2024. Notably, there has been a gradual increase in enrollments among the 21-25 age group, climbing to 1295 in 2025. While enrollment numbers in the 26-30 and 31-40 age brackets have remained relatively stable, the 41-50 age group saw a rise in 2025, increasing to 243 after a dip in 2024. Students aged 51 and older have contributed to enrollment numbers in smaller proportions, with fluctuations across the years.

Academic Advising

Academic advising is a key component of student success, providing individualized guidance to help students navigate their academic journey. Advisors work with students each semester to discuss course choices and registration, ensuring that students stay on track with their declared educational programs and goals. Advisors also help students make informed decisions about future semesters, aligning coursework with their career plans and academic aspirations. While students are typically assigned advisors based on their location, they have the flexibility to meet with their advisors on the main campus, at extension centers, or through Zoom, phone calls, and email.



Additionally, students can easily make their own advising appointments online, allowing for greater accessibility and convenience.

Advising appointments are not just about selecting classes—they are comprehensive discussions that take into account a student's personal and academic life. Advisors and students explore potential career paths, academic achievements, and any challenges the student may be facing. These conversations often lead to proactive interventions, such as tutoring referrals or accommodations through accessibility services, to support the student's academic success. Every student has a declared program and educational goal, and academic advising is a form of teaching that guides students in developing the skills, knowledge, and strategies needed to achieve their goals.

Academic advising encourages students to take ownership of their education, fostering critical thinking, problem-solving, and decision-making skills. Advisors serve as a consistent support system throughout a student's academic career, helping them to identify opportunities and overcome obstacles, ultimately guiding them to degree or certificate completion.

2023-2024

Number and Percentage of Students at Each Credit Hour Milestone	Total Students	15+ Credit Hrs	% with 15+ Credits	30+ Credits	% with 30+ Credits	45+ Credits	% with 45+ Credits	60+ Credits	% with 60+ Credits
Totals	1532	1428	93.21%	1351	88.19%	1274	83.16%	1212	79.11%

This chart represents the credit hours that students were enrolled in throughout the academic year, not just a single semester. It tracks the number of students who reached specific credit hour milestones, such as 15, 30, 45, and 60 credit hours, as well as the percentage of the total student body who reached these milestones. For example, out of 1,532 total students, 1,428 (93.21%) completed at least 15 credit hours, 1,351 (88.19%) completed at least 30 credit hours, and so on.

In terms of advising, these numbers provide insight into students' progress toward completing degrees or certificates. Advisors must balance helping students stay on track to finish in a timely manner while also considering individual circumstances that may affect a student's ability to take a full-time course load. Family obligations, work, and other outside factors may impact a student's academic progress, so advisors need to support students with personalized plans that align with their specific goals and situations. This data highlights the importance of considering both academic milestones and personal needs to help students succeed.



Financial Aid

The 2023-2024 academic year proved to be a particularly challenging period for the Financial Aid Office. The rollout of the 2024-2025 FAFSA by the Department of Education was plagued by a series of delays, inconsistent communication, and evolving guidelines, creating an unpredictable environment for both students and staff. These ongoing disruptions in the federal aid process added significant complexity to the work of our Financial Aid Office, which was forced to continually adjust to shifting information and timelines.

Despite these obstacles, the team remained steadfast in their commitment to serving our students. They worked diligently to process financial aid packages as swiftly and accurately as possible under the circumstances, ensuring that students could still access the funding they needed to pursue their education. The office navigated these hurdles resiliently, providing timely assistance, personalized support, and clear communication to students and their families. This level of dedication is a testament to their hard work and adaptability during a time of ongoing uncertainty.

Financial Aid Awards	2022		2023		2024	
	Students	Amount	Students	Amount	Students	Amount
Academic & Department Scholarships	141	\$ 344,759.73	122	\$ 269,143.42	139	\$ 311,200.22
Pell Grant	508	\$ 1,833,020.05	516	\$ 2,015,091.13	525	\$ 2,205,496.04
Athletic Scholarship	97	\$ 342,292.64	104	\$ 377,492.26	104	\$ 406,083.59
State Awards (ING, IVG, and MAP)	330	\$ 312,594.84	326	\$ 515,875.00	322	\$ 597,025.00
SEOG (Supp Ed Opp Grant)	12	\$ 7,738.00	17	\$ 8,145.00	18	\$ 8,145.00
Veteran Awards (Chapter 33 Post 911 GI Bill & MIA/POW)	6	\$ 17,566.34	8	\$ 20,730.12	11	\$ 38,218.00
Dual Credit Tuition Waiver	417	\$ 2,373,757.50	454	\$ 2,561,455.00	394	\$ 2,382,159.00
Other Waivers (Faculty/Staff, Senior Citizen, DCFS, Etc)	1723	\$3,212,183.09	1616	\$3,164,569.70	1374	\$2,098,575.55



Financial Aid Awards by Gender	Males						Females					
	2022		2023		2024		2022		2023		2024	
	Students	Amount	Students	Amount	Students	Amount	Students	Amount	Students	Amount	Students	Amount
Academic & Department Scholarships	37	\$ 89,164.67	35	\$ 84,150.00	51	\$ 134,144.82	104	\$ 255,595.06	87	\$ 184,993.42	88	\$ 177,055.40
Pell Grant	144	\$520,859.58	158	\$611,703.07	179	\$754,732.16	364	\$1,312,160.47	358	\$1,403,388.06	346	\$1,450,763.88
Athletic Scholarship	42	\$148,415.70	51	\$173,416.26	50	\$233,732.00	55	\$ 193,876.94	53	\$ 204,076.00	54	\$ 172,351.59
State Awards (ING, IVG, and MAP)	90	\$ 83,956.58	93	\$144,820.00	109	\$191,770.00	240	\$ 228,638.26	233	\$ 371,055.00	213	\$ 405,255.00
SEOG (Supp Ed Opp Grant)			5	\$ 2,400.00	4	\$ 1,901.00	12	\$ 7,738.00	12	\$ 5,745.00	14	\$ 6,244.00
Veteran Awards (Chapter 33 Post 911 GI Bill and MIA/POW)	3	\$ 10,372.88	2	\$ 2,542.62	6	\$ 21,848.00	3	\$ 7,193.66	6	\$ 18,187.50	5	\$ 16,370.00
Other Waivers	52	\$ 64,796.27	62	\$ 87,615.00	42	\$ 69,018.00	98	\$ 143,956.30	109	\$ 166,343.50	87	\$ 156,988.00

Departmental & Academic Scholarships by Race/Ethnicity	2022		2023		2024	
	Students	Amount	Students	Amount	Students	Amount
American Indian	0	\$ -	2	\$ 4,680.00	7	\$ 14,695.00
African American	10	\$ 28,545.80	19	\$ 33,308.42	14	\$ 24,438.27
Asian	0	\$ -	2	\$ 5,415.00	2	\$ 6,882.63
Hawaiian/Pacific Islander	0	\$ -	0	\$ -	0	\$ -
Hispanic	7	\$ 11,212.98	6	\$ 10,475.00	6	\$ 9,381.56
White	121	\$ 301,130.95	91	\$213,650.00	106	\$243,047.02
Two or More Races	1	\$ 1,155.00	0	\$ -	1	\$ 2,133.18

Pell Grant by Race/Ethnicity	2022		2023		2024	
	Students	Amount	Students	Amount	Students	Amount
American Indian	4	\$11,033.00	11	\$53,457.00	9	\$29,784.03
African American	117	\$418,718.42	137	\$575,575.48	134	\$550,937.52
Asian	2	\$6,496.00	2	\$6,817.00	2	\$14,302.00
Hawaiian/Pacific Islander	2	\$9,742.00	1	\$3,447.00	2	\$12,017.00
Hispanic	32	\$119,733.92	35	\$133,440.78	30	\$134,866.06
White	337	\$1,227,541.50	318	\$1,196,691.87	339	\$1,416,632.43
Two or More Races	2	\$5,818.00	4	\$14,642.00	3	\$17,314.00



Athletic Scholarships by Race/Ethnicity	2022		2023		2024	
	Students	Amount	Students	Amount	Students	Amount
American Indian	3	\$ 12,430.40	5	\$ 14,082.71	7	\$ 22,823.00
African American	32	\$118,507.40	37	\$143,896.50	32	\$125,085.50
Asian	0	\$ -	0	\$ -	0	\$ -
Hawaiian/Pacific Islander	1	\$ 2,306.00	0	\$ -	0	\$ -
Hispanic	4	\$ 17,362.00	3	\$ 11,350.00	3	\$ 8,915.00
White	52	\$178,097.44	56	\$200,118.05	60	\$247,600.09
Two or More Races	1	\$ 4,241.60	2	\$ 3,605.00	1	\$ 670.00

State Awards (ING, IVG, & MAP) by	2022		2023		2024	
	Students	Amount	Students	Amount	Students	Amount
American Indian	2	\$ 1,854.00	7	\$ 15,510.00	3	\$ 4,170.00
African American	58	\$51,034.26	69	\$111,565.00	66	\$124,295.00
Asian	1	\$ 720.00	1	\$ 2,850.00	2	\$ 5,215.00
Hawaiian/Pacific Islander	1	\$ 763.20			2	\$ 4,620.00
Hispanic	20	\$18,237.39	25	\$ 42,130.00	21	\$ 40,675.00
White	241	\$235,615.33	218	\$ 332,990.00	222	\$ 405,785.00
Two or More Races	1	\$ 278.40	2	\$ 2,755.00	2	\$ 3,885.00

SEOG (Supp Ed Opp Grant) by Race/Ethnicity	2022		2023		2024	
	Students	Amount	Students	Amount	Students	Amount
American Indian	0	\$ -	0	\$ -	0	\$ -
African American	3	\$1,934.50	3	\$1,425.00	3	\$1,358.00
Asian	0	\$ -	0	\$ -	0	\$ -
Hawaiian/Pacific Islander	0	\$ -	0	\$ -	0	\$ -
Hispanic	1	\$ 644.84	1	\$ 480.00	2	\$ 814.00
White	8	\$5,158.66	12	\$5,760.00	13	\$5,973.00
Two or More Races	0	\$ -	0	\$ -	0	\$ -



Veteran Awards (Post 911 GI Bill, MIA/POW)	2022		2023		2024	
	Students	Amount	Students	Amount	Students	Amount
American Indian	0	\$ -	0	\$ -	0	\$ -
African American	1	\$1,343.66	2	\$3,535.12	1	\$ 548.00
Asian	0	\$ -	0	\$ -	0	\$ -
Hawaiian/Pacific Islander	0	\$ -	0	\$ -	0	\$ -
Hispanic	0	\$ -	0	\$ -	0	\$ -
White	4	\$12,322.68	5	\$13,295.00	9	\$36,680.00
Two or More Races	0	\$ -	0	\$ -	0	\$ -

Other Wiavers by Race/Ethnicity	2022		2023		2024	
	Students	Amount	Students	Amount	Students	Amount
American Indian	3	\$ 5,390.00	2	\$ 4,800.00	2	\$ 6,115.00
African American	15	\$ 26,164.00	18	\$ 25,334.00	19	\$ 28,798.00
Asian	0	\$ -	0	\$ -	1	\$ 2,950.00
Hawaiian/Pacific Islander	0	\$ -	0	\$ -	0	\$ -
Hispanic	4	\$ 3,720.00	5	\$ 14,840.00	5	\$ 12,250.00
White	119	\$159,348.57	138	\$193,189.50	92	\$157,293.00
Two or More Races	2	\$ 4,530.00	4	\$ 8,225.00	5	\$ 10,730.00

Academic & Department Scholarships by Age	2022		2023		2024	
	Students	Amount	Students	Amount	Students	Amount
<18	18	\$ 17,710.00	13	\$ 15,590.00	21	\$ 16,563.24
18-20	119	\$302,772.53	97	\$226,963.42	112	\$257,137.66
21-25	3	\$ 5,770.00	6	\$ 12,530.00	14	\$ 21,666.19
26-30	4	\$ 6,612.60	1	\$ 810.00	1	\$ 3,181.02
31-40	7	\$ 9,987.80	7	\$ 10,700.00	4	\$ 8,578.21
41-50	2	\$ 1,906.80	3	\$ 2,550.00	2	\$ 950.00
51-61					1	\$ 3,123.90
62+	0	\$ -	0	\$ -	0	\$ -



Pell Grant by Age Range	2022		2023		2024	
	Students	Amount	Students	Amount	Students	Amount
<18	20	\$32,252.00	22	\$59,929.00	24	\$65,842.82
18-20	235	\$918,275.52	220	\$907,685.42	217	\$1,013,067.98
21-25	105	\$336,143.64	115	\$435,930.04	118	\$422,629.41
26-30	64	\$207,422.84	68	\$236,891.85	78	\$301,853.34
31-40	75	\$233,620.05	72	\$239,457.58	79	\$282,146.09
41-50	20	\$72,148.00	27	\$87,675.24	21	\$88,753.65
51-61	9	\$30,722.00	11	\$47,522.00	8	\$28,659.51
62+	1	\$2,436.00			1	\$2,543.24

Athletic Awards by Age Range	2022		2023		2024	
	Students	Amount	Students	Amount	Students	Amount
<18	4	\$ 6,892.00	4	\$ 7,340.00	5	\$ 16,810.00
18-20	91	\$302,410.64	93	\$329,120.26	96	\$373,198.59
21-25	9	\$ 32,990.00	12	\$ 41,032.00	5	\$ 16,075.00
26+	0	\$ -	0	\$ -	0	\$ -

State Awards (ING, IVG, MAP) by Age Range	2022		2023		2024	
	Students	Amount	Students	Amount	Students	Amount
<18	3	\$ 3,148.13	6	\$ 12,010.00	7	\$ 13,410.00
18-20	144	\$152,211.19	128	\$221,685.00	138	\$283,290.00
21-25	68	\$ 56,248.46	84	\$127,025.00	75	\$131,375.00
26-30	42	\$ 37,423.80	44	\$ 63,550.00	40	\$ 69,555.00
31-40	52	\$ 43,060.46	36	\$ 49,710.00	45	\$ 67,425.00
41-50	16	\$ 15,580.40	22	\$ 28,780.00	12	\$ 22,695.00
51-61	5	\$ 4,922.40	6	\$ 13,115.00	5	\$ 9,275.00
62+	0	\$ -	0	\$ -	0	\$ -



SEOG (Supp Ed Opp Grant) by Age Range	2022		2023		2024	
	Students	Amount	Students	Amount	Students	Amount
<18	0	\$ -	1	\$ 480.00	0	\$ -
18-20	4	\$2,579.33	6	\$2,880.00	10	\$4,615.00
21-25	2	\$1,289.67	5	\$2,400.00	3	\$1,358.00
26-30	2	\$1,289.66	2	\$ 960.00	2	\$ 543.00
31-40	2	\$1,289.67	3	\$1,425.00	3	\$1,629.00
41-50	2	\$1,289.67	0	\$ -	0	\$ -
51-61	0	\$ -	0	\$ -	0	\$ -
62+	0	\$ -	0	\$ -	0	\$ -

Veteran Awards (Post 911 GI Bill & MIA/POW) by Age Range	2022		2023		2024	
	Students	Amount	Students	Amount	Students	Amount
<18	0	\$ -	1	\$1,350.00	1	\$ 1,485.00
18-20	0	\$ -	1	\$ 3,560.00	3	\$ 12,335.00
21-25	1	\$3,900.00	1	\$6,240.00	2	\$ 6,540.00
26-30	1	\$1,343.66	3	\$5,352.62	4	\$12,973.00
31-40	3	\$7,624.50	2	\$4,182.50	2	\$ 4,885.00
41-50	0	\$ -	0	\$ -	0	\$ -
51-61	1	\$4,698.18	0	\$ -	0	\$ -
62+	0	\$ -	1	\$ 45.00	0	\$ -

Other Waivers by Age Range	2022		2023		2024	
	Students	Amount	Students	Amount	Students	Amount
<18	328	\$ 1,008,414.00	431	\$ 1,174,932.50	368	\$ 1,278,044.60
18-20	642	\$ 2,356,867.32	672	\$ 2,410,230.64	541	\$ 1,753,909.95
21-25	228	\$ 264,521.10	221	\$ 352,642.48	196	\$ 217,894.80
26-30	129	\$ 272,398.70	146	\$ 270,053.50	144	\$ 186,449.70
31-40	173	\$ 586,430.67	159	\$ 567,362.00	156	\$ 395,276.90
41-50	92	\$ 158,153.30	92	\$ 89,823.00	93	\$ 61,982.10
51-61	30	\$ 40,627.00	35	\$ 39,916.50	38	\$ 28,911.50
62+	10	\$ 74,703.00	7	\$ 12,692.50	7	\$ 15,645.00



Graduation

Associate Degree Completers	2022		2023		2024	
	Total Completers	Completed During High School	Total Completers	Completed During High School	Total Completers	Completed During High School
Accounting			1	0	1	0
Administrative Assistant						
Agriculture Business and Management			2	0	2	0
Associate Degree Nursing	14	0	19	0	28	0
Associate of Arts	124	11	92	11	115	10
Associate of General Studies	24	0	31	9	22	1
Associate of Science	40	2	22	2	48	5
Automotive Technology AAS	3	0	2	0	1	0
Business Management			1	0	1	0
Computer System & Security Spec.	2	0			2	0
Construction Management of Laborers AAS	1	0	5	0	3	0
Criminal Justice	4	0	2	0	2	0
Fish and Wildlife Management	3	0	1	0		
Heating/Ventilation/AC/Refrigeration	1	0				
Information Processing Technology			1	0		
Medical Laboratory Technologist	3	0	4	0	2	0
Occupational Therapy Assistant	8	0	4	0	1	0
Social Work	2	0			4	0
Surgical Technology AAS			6	0	3	0



Certificate Completers	2022		2023		2024	
	Total Completers	Completed During High School	Total Completers	Completed During High School	Total Completers	Completed During High School
Agriculture	2	0				
Arc Welding	8	0	8	0	11	0
Automotive Maintenance & Lgt Repair	5	0	2	0		
Automotive Technician Assistant	8	0	4	0	1	0
Basic Heating and Air Conditioning	5	0	1	0		
Basic Residential Electricity	2	0	8	0	1	0
Certified Nurse Assistant	30	14	41	26	67	43
Combination Welding	5	0	6	0	10	0
Cosmetology	3	0	5	0	7	0
Criminal Justice	2	0			2	0
Gas Welding	12	0	15	0	9	0
General Education Core	120	11	93	11	127	10
Internet & Computing Core Prep	2	0			5	0
Medical Assistant	5	0	6	0	8	0
Medical Biller	3	0	5	0	4	0
Medical Coder	3	0	5	0	3	0
Medical Coding Specialist	5	0	2	0	6	0
Medical Office Assistant	1	0	2	0		
Microsoft Office Specialist Prep	6	0	7	0	5	4
MIG Welding	12	0	15	0	9	0
Nail Technology Certificate	3	0	3	0	2	0
Phlebotomy					8	0
Pipe Welding	8	0	8	0	11	0
Practical Nursing	27	0	15	0	31	0
Surgical Technology	2	0				
TIG Welding	8	0	8	0	11	0
Truck Driving	30	0	53	0	49	0

The data shows program completers from 2022 to 2024, totals and the number of high school students completing each program. Programs like Associate of Arts, General Education Core, and Certified Nurse Assistant have the highest number of completers, with the latter having a significant number of high school participants. Welding programs, including Arc Welding and TIG Welding, consistently saw completions,



mainly from non-high school students. Overall, total completers increased yearly, with 546 in 2022, 505 in 2023, and 622 in 2024.

Total Completions by Ethnicity	2020	2021	2022	2023	2024
American Indian	1	5	4	6	9
Asian		1	3		2
Black or African American	12	51	48	55	61
Hawaiian/Pacific Islander			1	1	2
Hispanic	10	11	10	20	15
Two or More Races		2		3	3
Unknown	6	3	8	3	11
White	149	302	241	236	297
Unduplicated Count	178	375	315	324	400

Total Completions by Gender	2020	2021	2022	2023	2024
F	130	259	195	192	260
M	48	116	120	132	140

Total Completions by Age	2020	2021	2022	2023	2024
<18	2	4	2	8	14
18-20	78	138	107	120	177
21-25	55	115	104	110	104
26-30	12	38	38	17	41
31-40	18	46	27	42	41
41-50	8	20	27	21	17
51-61	5	10	11	5	10
62-65		4			3
66-67			1	2	
68+		2			1



Total Completions by Pell Eligibility	2020	2021	2022	2023	2024
Y	91	215	176	194	222
	121	241	216	207	276

Learning Resources that Support Attainment of their Educational Goals

Student Services Available Online

Student Services Available Online		
Service Category	Online Services Available	Future Plans and Improvements
Mental Health and Wellness	Mindwise, Emails, one-on-one sessions, presentations	Virtual counseling sessions, calming space, and online appointment scheduling availability using the EAB Navigate 360 platform.
Academic Support	Online Tutoring, test proctoring, disability accommodations, IEP Transition Support for College Bound Students, FYE Course	The expansion of online tutoring, improved accessibility tools, the full rollout of the FYE course in the fall of FY26, and targeted EAB campaigns to send proactive alerts, reminders, and academic support messages to students.
Career Services	Career Coach, Virtual career advising, job postings, resume assistance, Wingspans platform, podcast interviews with industry partners & NCDA resources	Enhanced job search tools, increased virtual workshops and resources, EAB messaging campaigns to support Career Services by providing targeted job alerts, event reminders, and career resources to boost student engagement and job readiness, Graduate First



		Destination Survey
Library & Research	Online databases, plagiarism remediation, research assistance	The expansion of digital resources and collaboration with high schools will expand access to SCC's cloud library and resources.
Clubs & Orgs	Online Meetings, community support resources, assistance, and promotion & participation via social media at basketball games	More virtual engagement events: The Student Engagement Team will plan events for athletic games to boost school spirit.

Counseling Services

Our [counselor](#) plays a vital role at Shawnee Community College, serving as the [HOUSE liaison](#), [benefits navigator](#), and [disability services](#) liaison and advocating and assisting [veterans and active-duty](#) students. She provides mental health counseling, academic and disability support, and advisement and helps students access essential resources and [basic needs](#). Beyond SCC, she serves on the [ICC TAC](#) Statewide Standards and Best Practices Committee, shaping policies that impact regional colleges. Through her multifaceted role, she ensures students receive comprehensive support for academic and personal success.

Counseling Services		
FY24	Total Hours	Total Unduplicated Students Served
One on One Sessions	186.7	57
External Referrals	-	30

Testing

The [testing center](#) is a hub for new and continuing students needing various tests. Online Proctored High-stakes Exams include testing for certification through Pearson VUE, ATI TEAS Nursing & OTA Entrance, INACE Certified Nursing Assistant, NCCT Medical Assistant & Phlebotomy, ACT WorkKeys, and NHA Billing & Coding.

(Access Database Report, 3.10.25)



Shawnee Community College Testing Services Overview						
Testing Services	2019	2020	2021	2022	2023	2024
Proctored Makeup Exams	615	540	372	450	253	148
Accuplacer Math & English	3152	1967	2073	838	1083	1112
Academic Accommodations Testing	N/A	N/A	200	238	163	80
Online Proctored High-stakes Exams	443	321	403	270	458	422

The service decrease reflects the testing center's staffing changes, which have involved transitioning from full-time to part-time staff. This adjustment has impacted the overall availability and scope of testing services, which are closely monitored to ensure continued student support.

Tutoring

For FY24, [Tutoring Services](#) supported **176 students**, providing **over 314 hours** of tutoring assistance. While this reflects a slight decrease from **197 students served in FY23**, the demand remains strong, particularly in **Math, English, and Science**, which continue to be the most requested subjects. Over the past five years, participation in tutoring has steadily increased from **94 students in 2020** to our current levels, demonstrating the growing impact and necessity of these academic support services.

Tutoring Services					
	2024	2023	2022	2021	2020
Total Students	176	197	167	130	94

To assess the effectiveness of tutoring services in supporting student success and retention, the following metrics were recorded for FY24:

FY24 Tutoring Services Impact on Student Retention and Success		
Retention Rate	Attrition Rate	Success Rate



76.73%	11.18%	65.76%
--------	--------	--------

These figures highlight the positive role of tutoring in improving student outcomes, with a 76.73% retention rate and a 65.76% success rate, reinforcing the importance of continued investment in academic support programs.

(CROA Report, 3.12.25)

Library

The SCC [Library](#) was a vital resource for students and faculty throughout the fiscal year, providing essential support and services. 3,211 individuals received direct assistance, with 4,064 recorded instances of library staff assistance.

The computer lab remained an essential hub for academic and research needs, welcoming 4,635 patrons over 138.5 open days. The average daily usage during the semester was 67.7 patrons, highlighting its critical role in student success.

(Polaris Report, 3.10.25)



Shawnee Community College Library Services Overview											
Library Usage Stats	Aug	Sept	Oct	Nov	Dec	Jan	Feb	Mar	Apr	May	FY24 Totals
total # of people helped	459	446	507	358	350	474	617	446	476	391	4524
Total # of times	692	569	584	410	425	646	738	539	608	478	5689
Computer Lab Usage	Aug	Sept	Oct	Nov	Dec	Jan	Feb	Mar	Apr	May	Totals
Days Open	24	20	21	18	14.5	21	20	20	22	22	202.5
Total Number of Patrons	912	789	770	545	387	579	653	443	598	399	6075
Average Number of Patrons per Open Day	38	39	37	30	27	28	33	22	27	18	299
Average per Day Before Semester	10.7	-	-	-	33.8	-	-	-	-	39.5	84
Average per Day During Semester	57.5	-	-	-	4.3	-	-	-	-	5.9	67.7

[Help Obtain Post-Graduation Employment](#)

Career Services

The [Career Services](#) Engagement Summary highlights outreach and engagement efforts across various events, presentations, student appointments, industry contacts, and career-related activities. This report showcases the impact of career services through job fairs, high school and college presentations, employer visits, mock interviews, and industry partnerships. Student engagement was achieved through one-



on-one appointments, resume workshops, and career exploration activities. The data reflects the commitment to connecting students with career opportunities, supporting workforce development, and fostering meaningful industry relationships.

FY 24 Career Services Engagement Summary						
Category	# of Events	Total Attendance	Industry Contacts	Resumes Collected	Internships Secured	Jobs Acquired
Presentations (All Combined)	45	2341	-	-	-	-
Job Fairs (SCC hosted one)	4	1918	-	-	-	-
Virtual Reality (VR) Events	7	179	-	-	-	-
Mock Interviews	2	11	6	-	-	-
Student Appointments	34	34	-	-	-	-
Industry Contacts	20	-	445	-	-	-
Employer Visits	4	34	5	-	-	-
Advisory Meetings	3	-	18	-	-	-
Career Podcast	2	-	2	-	-	-
Career & Community Events	6	421	-	-	-	-
Resume Collection Events (Career Coach)	4	-	-	315	-	-
Internships Secured	-	-	-	-	295	-
Jobs Acquired	-	-	-	-	-	62

The Graduate Employment and Salary Analysis by Program provides insights into average starting salaries for graduates within a 30-mile radius of Shawnee Community College. Data from Lightcast [Career Coach](#) offers a snapshot of regional labor market



trends to help students make informed career decisions. This analysis supports career planning and program evaluation by aligning educational pathways with local employment opportunities.

(Lightcast Career Coach Analytics, Report, 3.10.25)

Graduate Employment and Salary Analysis by Program	
Program	Entry Salary
CNA	\$29,016
CMA	\$30,920
OTA	\$46,462
LPN	\$43,939
ADN	\$54,609
Medical Biller	\$31,009
Medical Coder	\$30,914
Medical Coding Specialist	\$30,914
Accounting	\$26,590
Ag Certificate	\$25,588
AG Business Management	\$28,162
Welding	\$30,835
Automotive	\$37,015
HVAC	\$32,875
Basic Electricity	\$25,334
Business Management	\$45,272



Computer Systems & Security	\$35,655
Construction Management of Laborers	\$35,819
Cosmetology	\$33,233
Criminal Justice AAS	\$31,785
Criminal Justice Certificate	\$30,180
Truck Driving	\$54,288

Legally Protected Disabilities Benefit

Accessibility and Resource Services

This report highlights trends in three key [accommodations](#) from 2021 to 2024. Extended Test Time remains the most requested, peaking at 114 students in 2023 before slightly declining to 103 in 2024. Alternative Testing Locations followed a similar trend, reaching 111 students in 2023 and 100 in 2024. Proctor/Reader Services grew steadily, increasing from 22 students in 2021 to 59 in 2024. While overall usage declined slightly in 2024, these accommodations remain essential for equitable access and student success.

Disability Counts (CROA Report, 3.12.25)

Unduplicated Student Count	2024	2023	2022	2021
Accessible Seating	14	14	14	10
Alt. Test Format	7	10	10	9
Alt. Test Loc.	100	111	85	60
Assistive Technology	13	21	19	13
Audiobooks	2	1	-	-



Closed Caption TV	2	1	-	-
Computer Software	1	3	2	1
Digital Recorders	12	12	12	16
Enlarged Print	3	5	4	2
Ext, Test Time	103	114	92	65
Frequent Breaks	-	1	-	-
Frequent Restroom Breaks	-	-	-	-
Notetaker	39	45	35	25
Pref. Seating	11	6	4	2
Proctor/Reader	59	57	45	22
Scribe	8	10	7	4
Count	125	134	126	44

Co-Curricular and Extracurricular Activities

Student Engagement

The Student Engagement Coordinator is vital in fostering a dynamic and inclusive campus environment at Shawnee Community College. She develops and implements a variety of events that enhance student involvement, including Welcome Week, Fall Fest, Spring Fest, Homecoming, blood drives, and college tours. She also organizes major institutional events such as SCC Day and [CTE Day](#), providing students with opportunities to explore academic pathways and career options.

Beyond event coordination, she oversees the [Student Senate](#) and monitors [clubs and organizations](#), empowering students to take on leadership roles and advocate for their peers. She also assists with the Student Trustee election process, ensuring student



representation on the Board of Trustees. Through her efforts, she enriches the student experience and fosters a strong sense of belonging at SCC.

Student Engagement Event Participation Summary		
Event	Fall 2023	Spring 2024
Student Success Saturday	155	-
WOW-Advisor in Cafe	4	2
WOW - Tech experts	10	1
WOW - Moodle 101	0	-
WOW - Career Services	4	-
WOW - The Cupboard	6	-
WOW - Fun Friday	21	-
WOW - Student Success Center	6	10
WOW - Clubs & Orgs Day	45	-
Tutoring Presentation	27	20
Constitution Day	47	-
Student Senate elections	47	72
Red Cross Blood Drive	15 Donations	-
FallFest	-	-
Pizza with the President	174	131
Counseling Presentation	12	10
Career Services - Snickers	37	-
Fall Transfer Fair	16	-
Finals Ice Cream	72	-



Finals Snacks	-	-
SCC Day 2023 (Pathways)	RSVP: 520, Lunch tickets: 412	-
WOW - MLK Jr Trivia	-	9
Homecoming Daily Events	-	32
Homecoming Dinner - Murder Mystery	-	52
Red Cross Blood Drive - Winter	-	Cancelled
SpringFest	-	-
Spring Transfer/Job Fair	-	-
National Library Day Scavenger Hunt	-	6
Red Cross Blood Drive-Spring	-	-
CTE Day 2024	-	RSVP: 539, Lunch tickets: 472

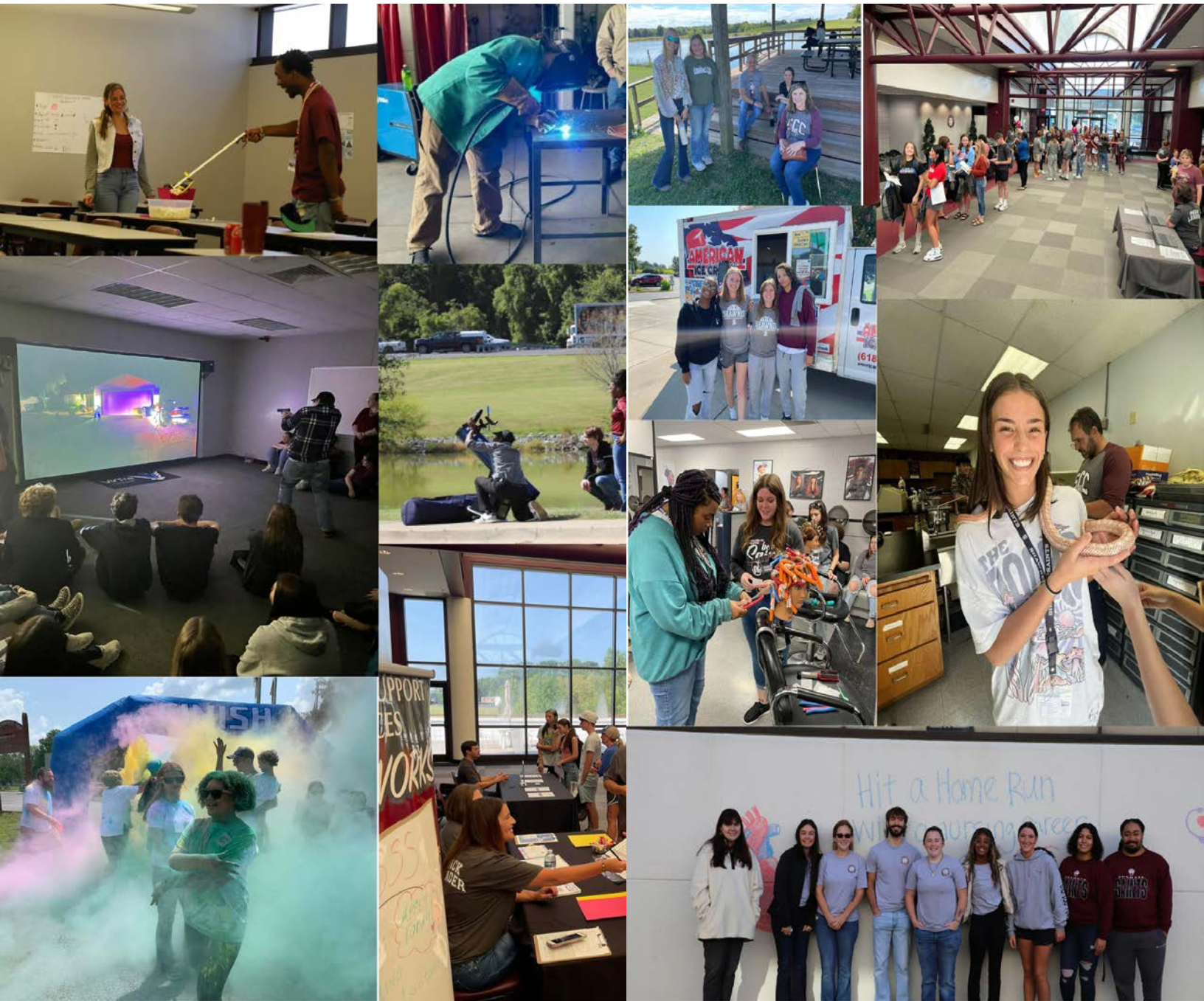
(Dashes (-) indicate that no data was submitted, the event was a come-and-go style event without a tracked attendance count, or no attendance was recorded.)

Clubs & Organizations

Active Clubs & Organizations	
Club & Org Name	# of Members
Ag Club	-
Ambassador Org.	15



Cosmetology Club	17
Dungeons and Dragons Club (New)	5
Esports Club	8
History Club	3
LGBTQ+ Diversity Club (New)	7
Music Club	12
Phi Theta Kappa	40
SCC Billiards (New)	5
SCC Welding Club (New)	-
Student Book Club	5
Student Senate	6



#WeAreShawnee



#WeAreShawnee



Athletics, Events, and Community Connections

Shawnee Community College remains dedicated to providing diverse co-curricular activities that enhance student engagement, foster school spirit, and build meaningful connections on campus and within the community.

During the **FY24 academic year**, the college hosted multiple **Pep Rally Events** to celebrate and support our [athletic teams](#). These events brought together students, faculty, and staff, creating a vibrant and spirited campus atmosphere. With team introductions, interactive games, and school spirit activities, the pep rallies were key in strengthening student engagement and promoting campus pride.

Saints Study Tables is a structured academic support initiative coordinated by the Athletic Advisor in partnership with the campus librarian. This program provides student-athletes with designated time for studying, tutoring, or meeting with instructors, ensuring they have the academic resources and environment needed to succeed. In Fall 2023, the program saw significant participation, with Men's Basketball logging 580 hours, Women's Basketball 145 hours, Volleyball 267 hours, Softball 563 hours, and Baseball 698 hours. For Spring 2024, the numbers have shifted slightly, with Men's Basketball recording 173 hours, Women's Basketball 16 hours, Volleyball 91 hours, Softball 415 hours, and Baseball 235 hours. The Saints Study Tables remain a vital framework for supporting our student-athletes academic progress alongside their athletic commitments.

Beyond campus, SCC prioritized community involvement through participation in **local parades**, the [Annual SCC Golf Challenge](#), and the [Fundamental Basketball Camp](#). Students, faculty, and staff represented the college in various community parades, showcasing school pride and strengthening connections with the surrounding region. The Annual Golf Challenge was a major fundraising and networking event, bringing together alumni, community members, and local businesses to support SCC's programs and student initiatives. Additionally, SCC's Fundamental Basketball Camp allowed local youth to develop skills while engaging with SCC athletes and coaches, reinforcing the college's commitment to youth development and community outreach.

Additionally, **90** student-athletes participated in our athletic programs, competing at a high level while contributing to leadership and outreach activities throughout the year.



Shawnee Community College remains committed to expanding co-curricular opportunities that enhance student life, foster community engagement, and promote a well-rounded college experience. *(Athletic Dept. events pictured below)*

